



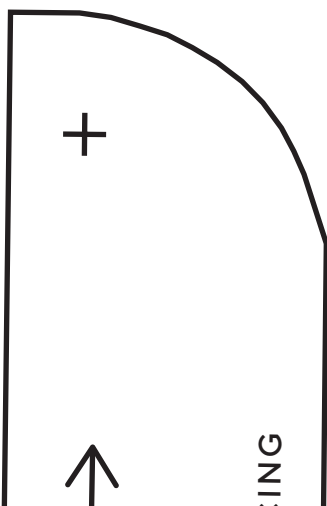
## Men's cargo shorts

PROJECT DESIGN © LOVE PRODUCTIONS 2024  
THIS DESIGN IS PROTECTED BY COPYRIGHT  
AND MUST NOT BE MADE FOR RESALE.

1.5-CM (5/8-IN.) SEAM ALLOWANCE INCLUDED (UNLESS OTHERWISE STATED)

### SIZING KEY

—————	34
.....	36
- - - - -	38
- . - . -	40
- - - - -	42
—————	44

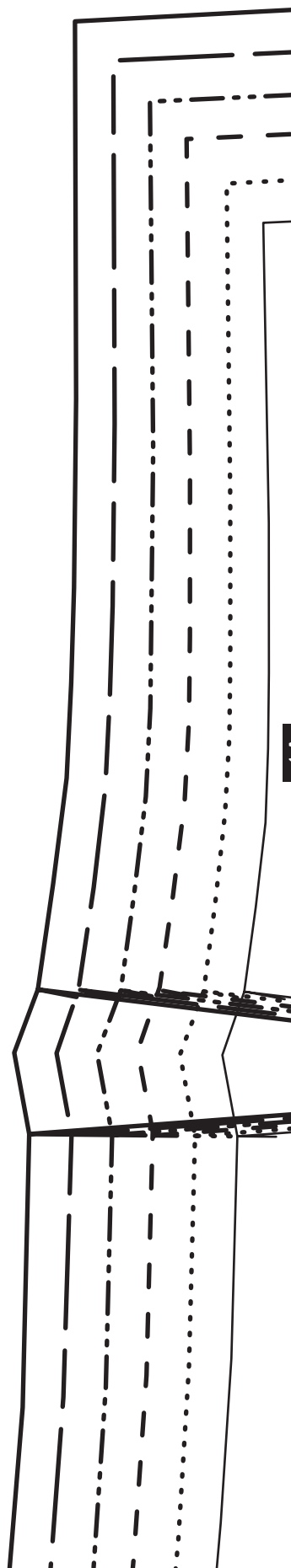


ING

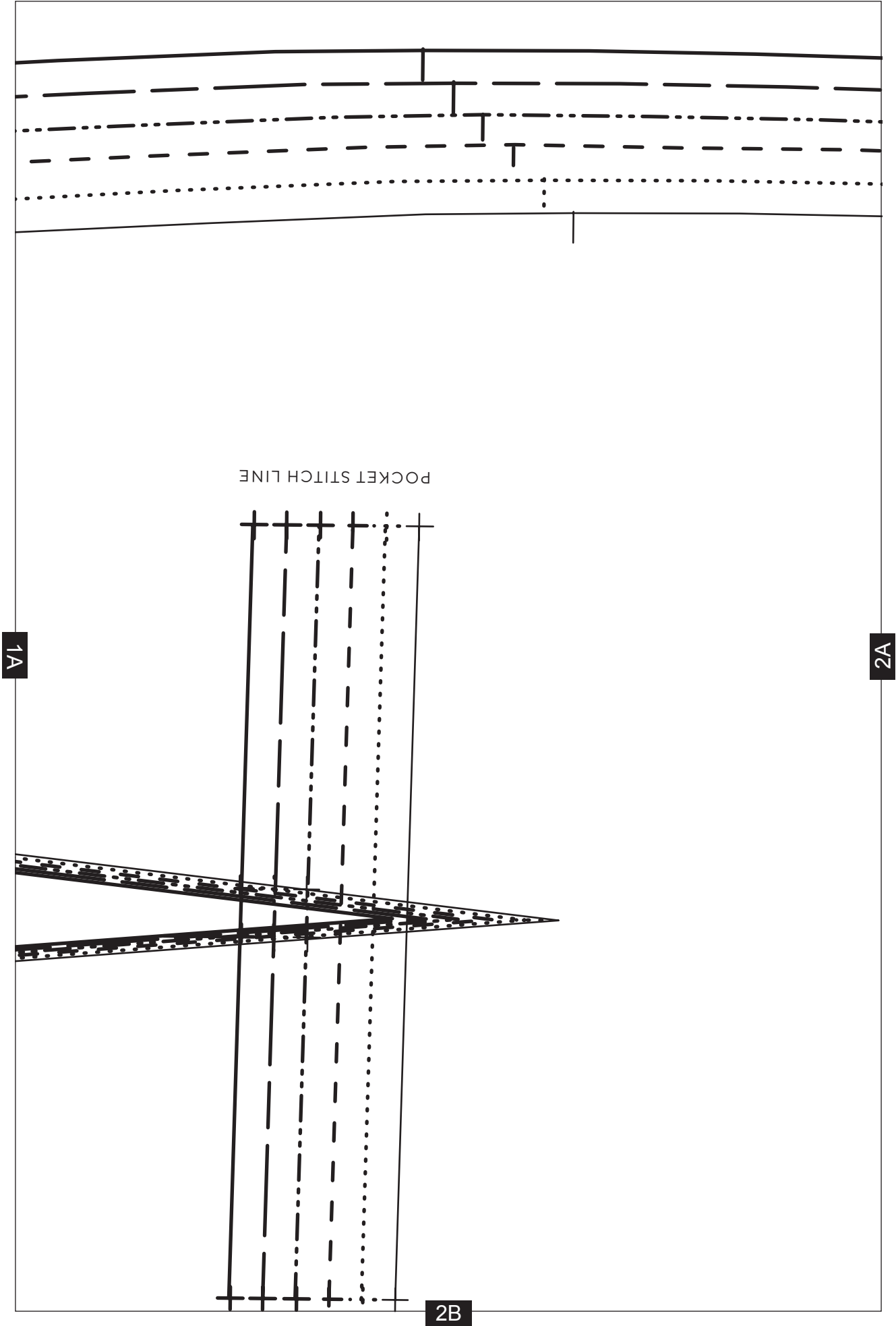
rgo shorts

1B

TEST SQUARE: 10CM x 10CM / 4 INCHES x 4 INCHES



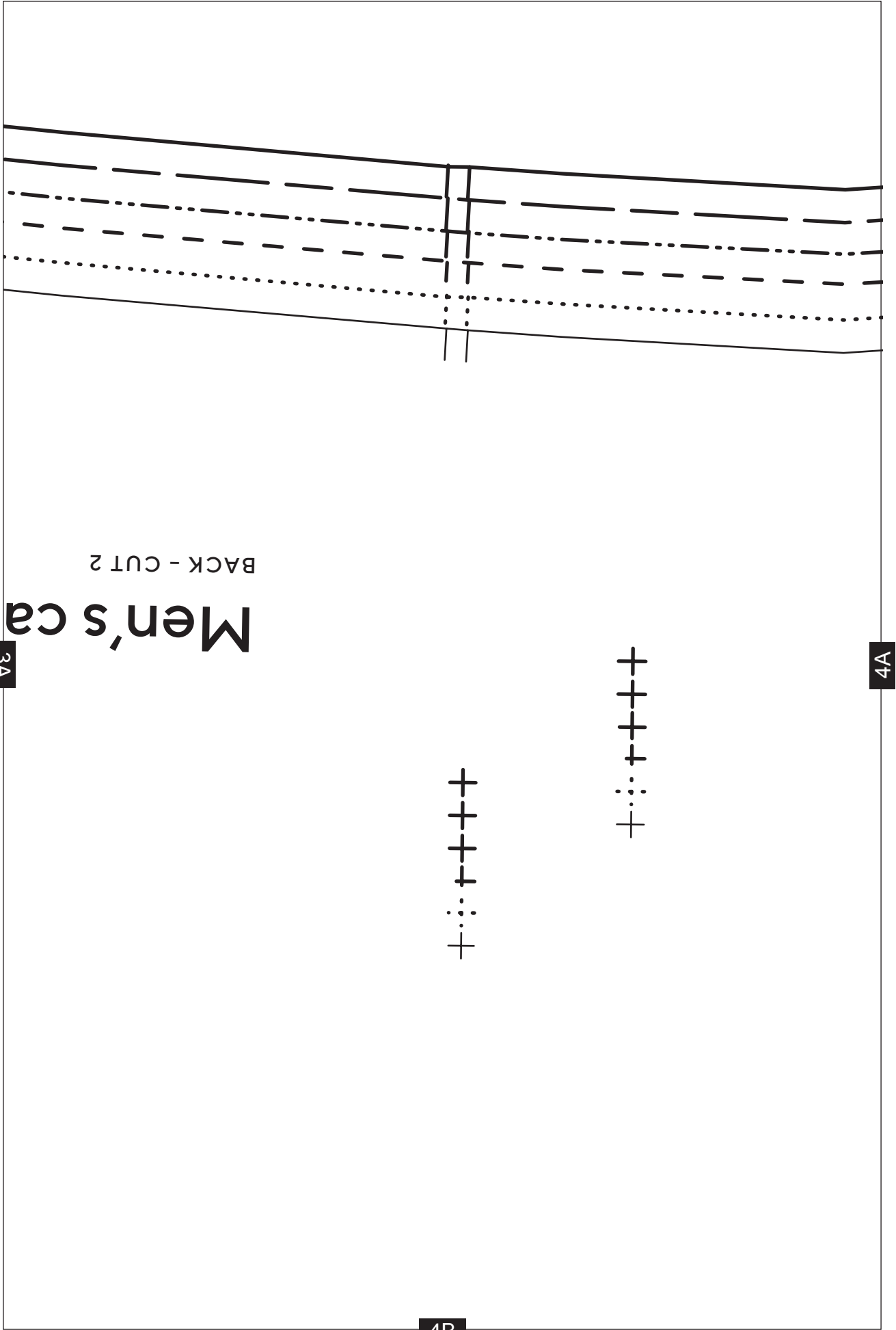
1A



3A

2A

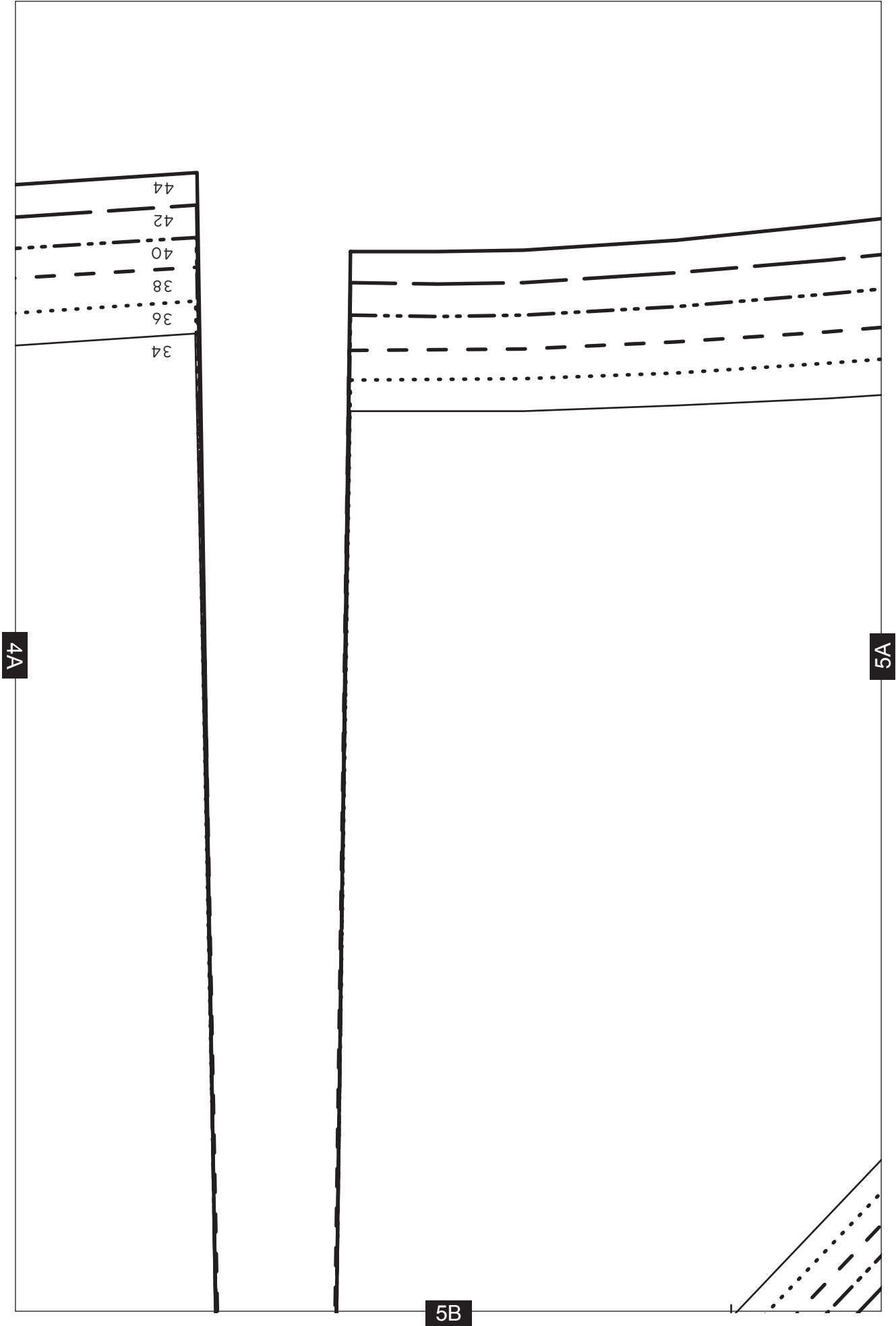
3E

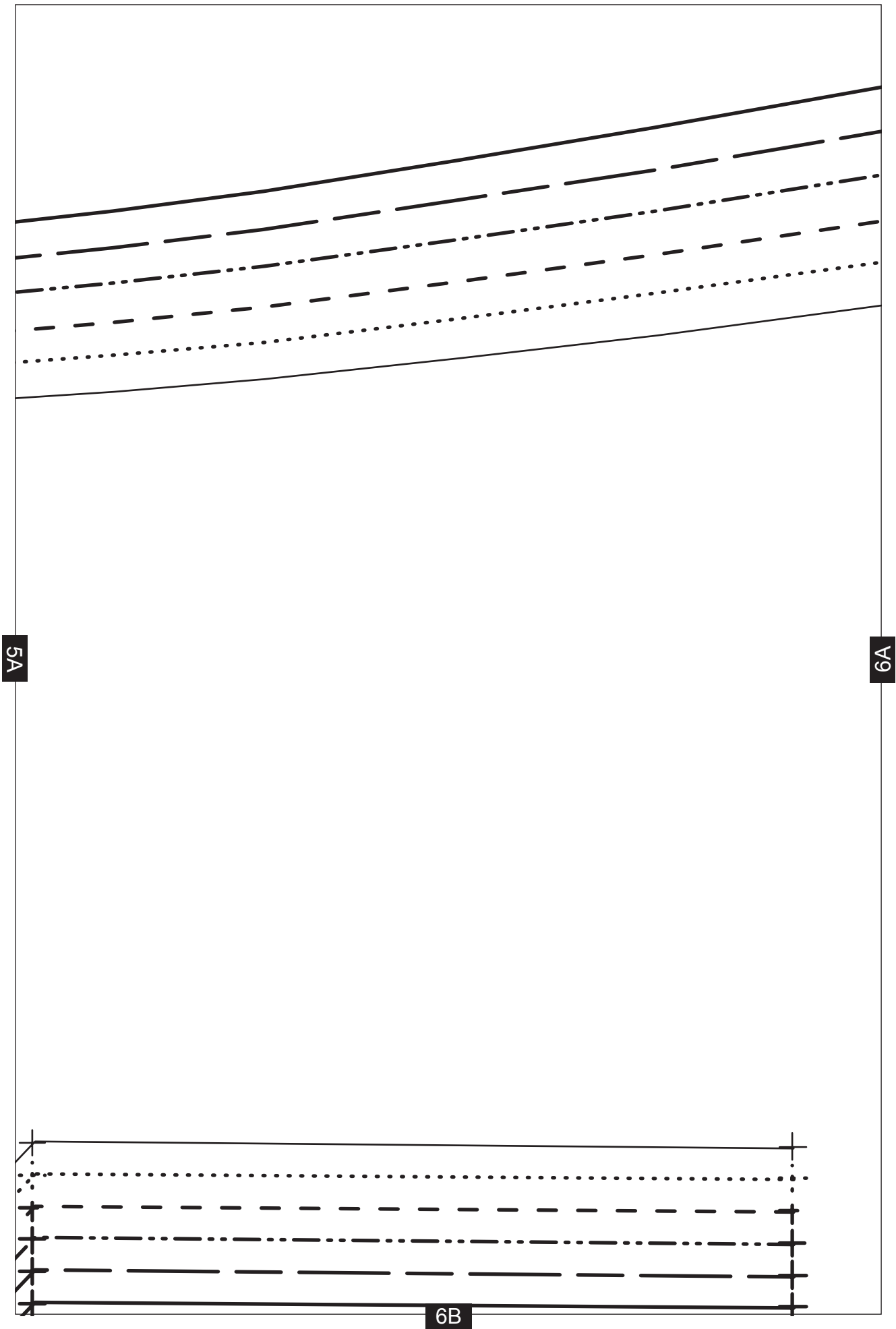


3A

4A

4B



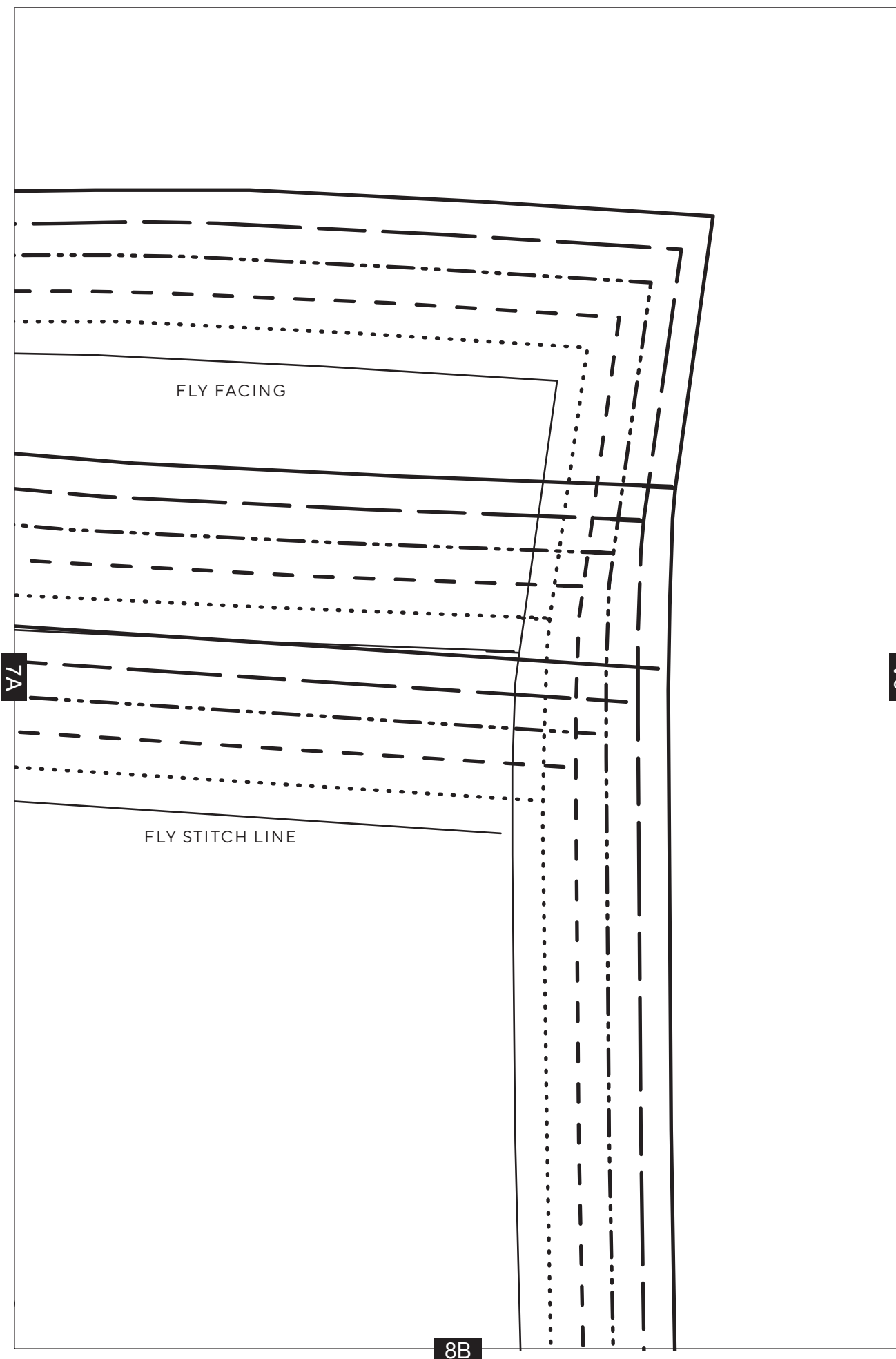


6A

7A

# Men's cargo shorts

FRONT VIEW 7B





9A

# Men's cargo shorts

PATCH POCKET - CUT 2

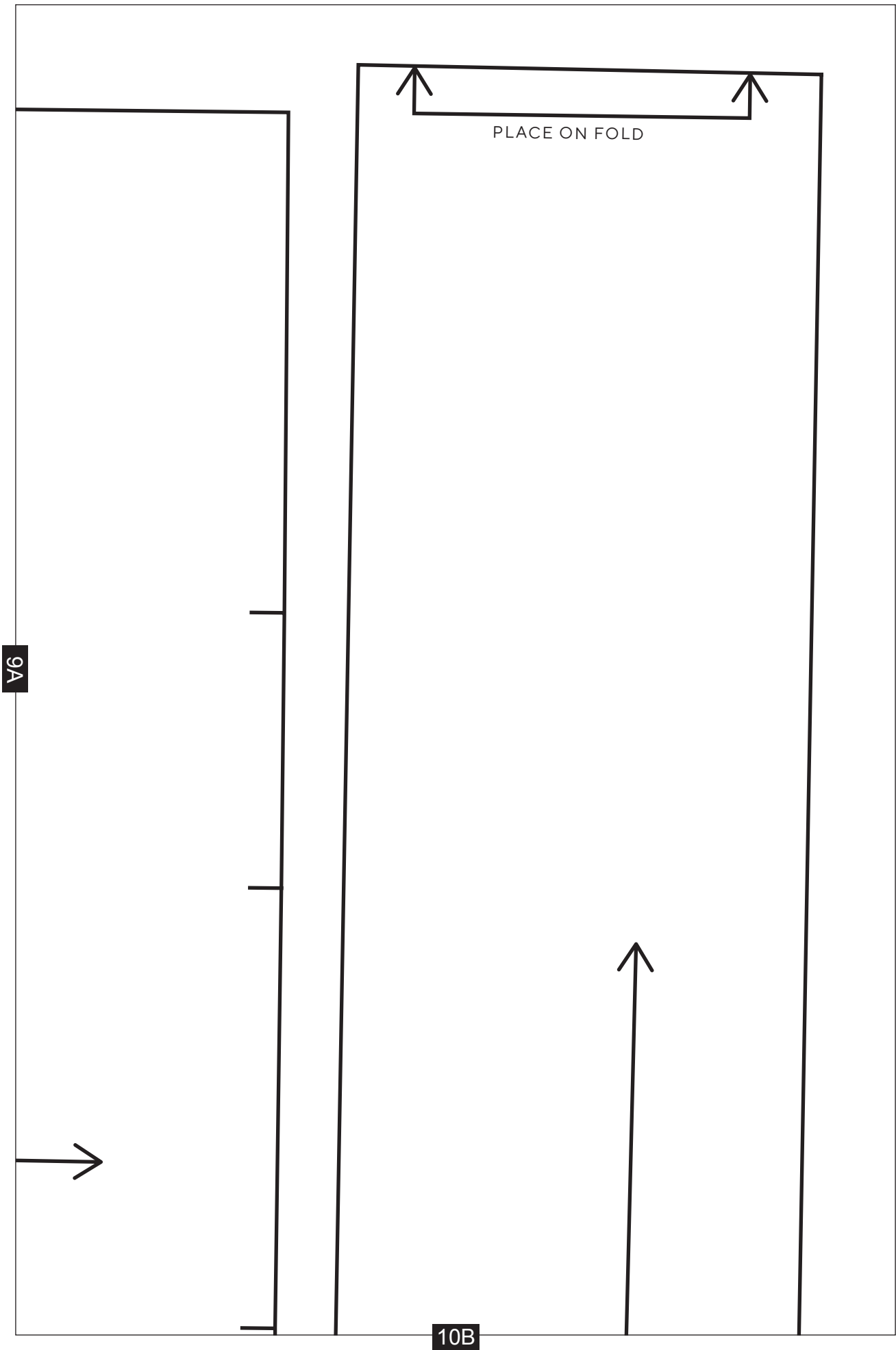
GRAINLINE



9B

8A





GRAINLINE

Men's cargo shorts

FLY SHIELD - CUT 1 IN FABRIC + 1 IN INTERFACING

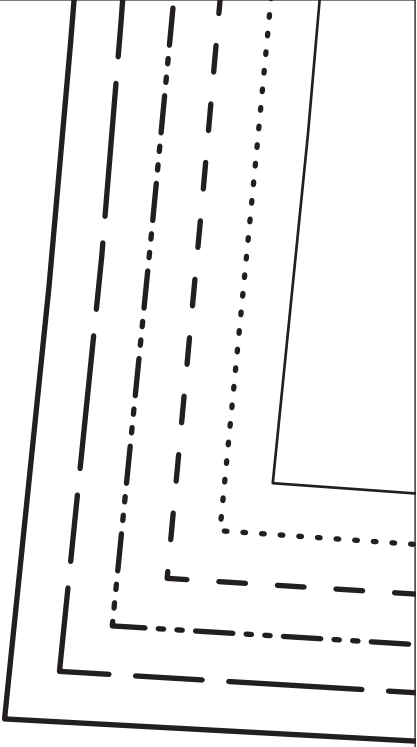
GRAINLINE

Men's cargo shorts

BELT LOOPS - CUT 1 IN FABRIC + 1 IN INTERFACING

Men's cargo shorts

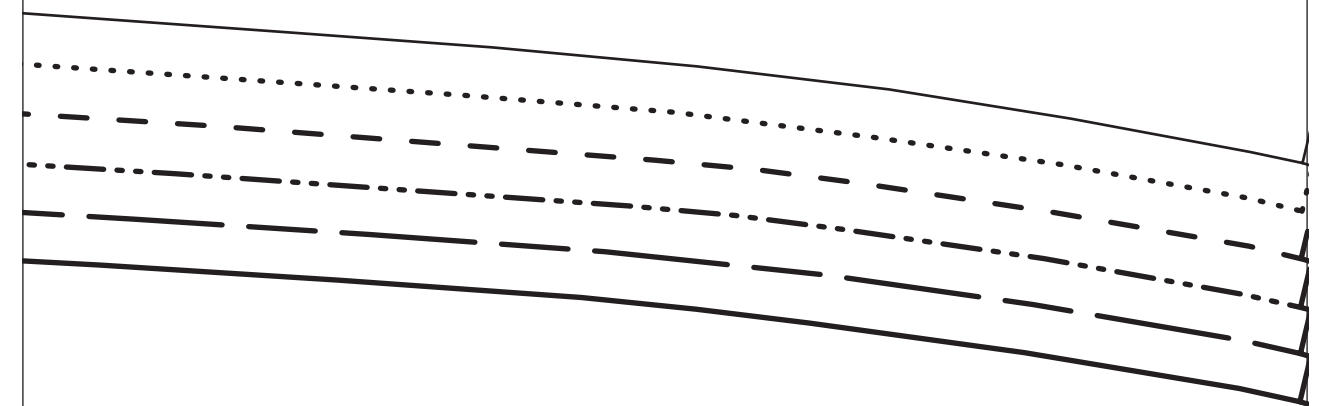
LOWER POCKET BAG - CUT 1 IN FABRIC + 1 IN INTERFACING



11A

11B

2B



11A

12A

go shorts

CUT 2 IN COTTON LINING

12B



3B

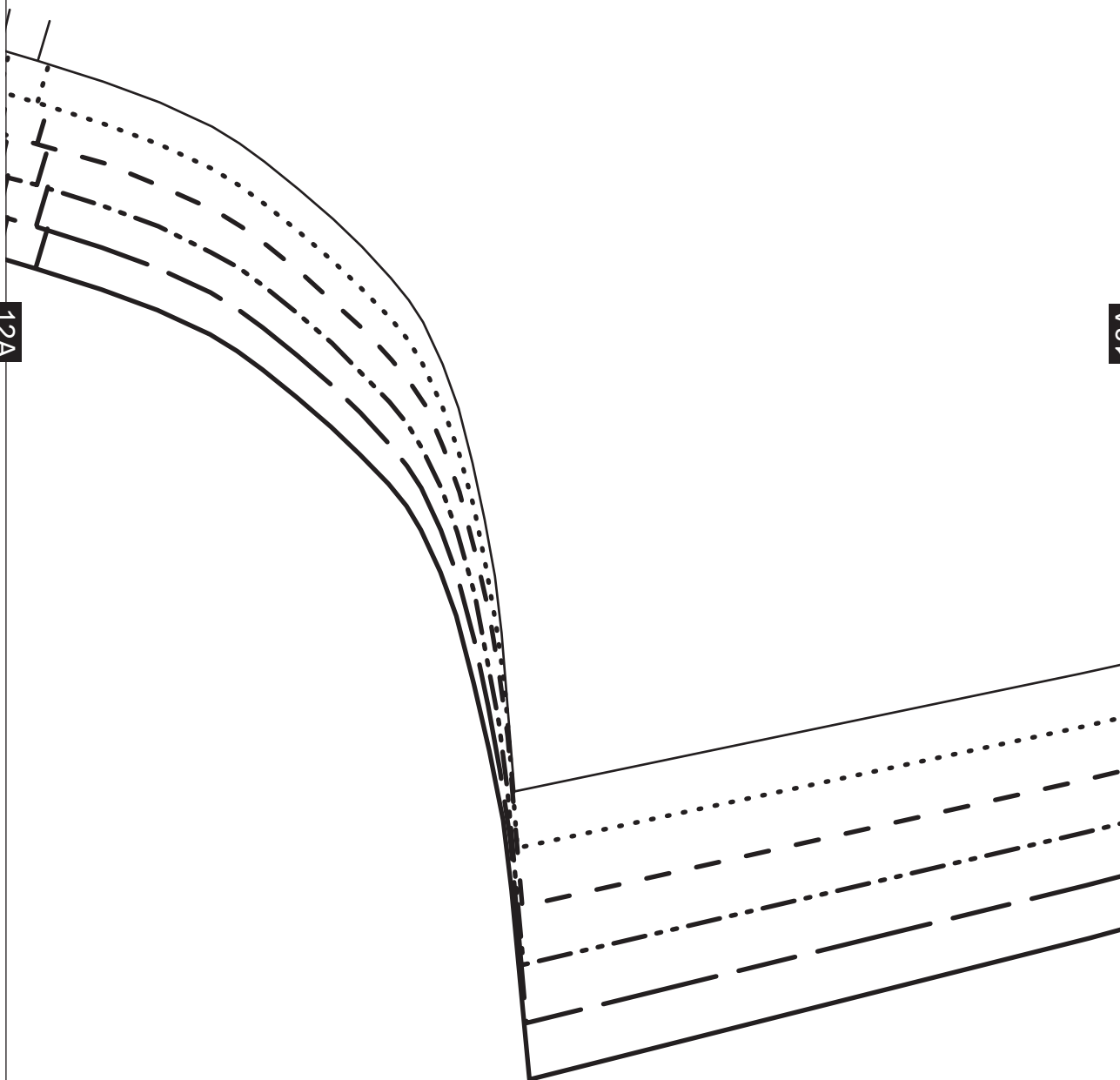
GRAINLINE



13A

13B

12A

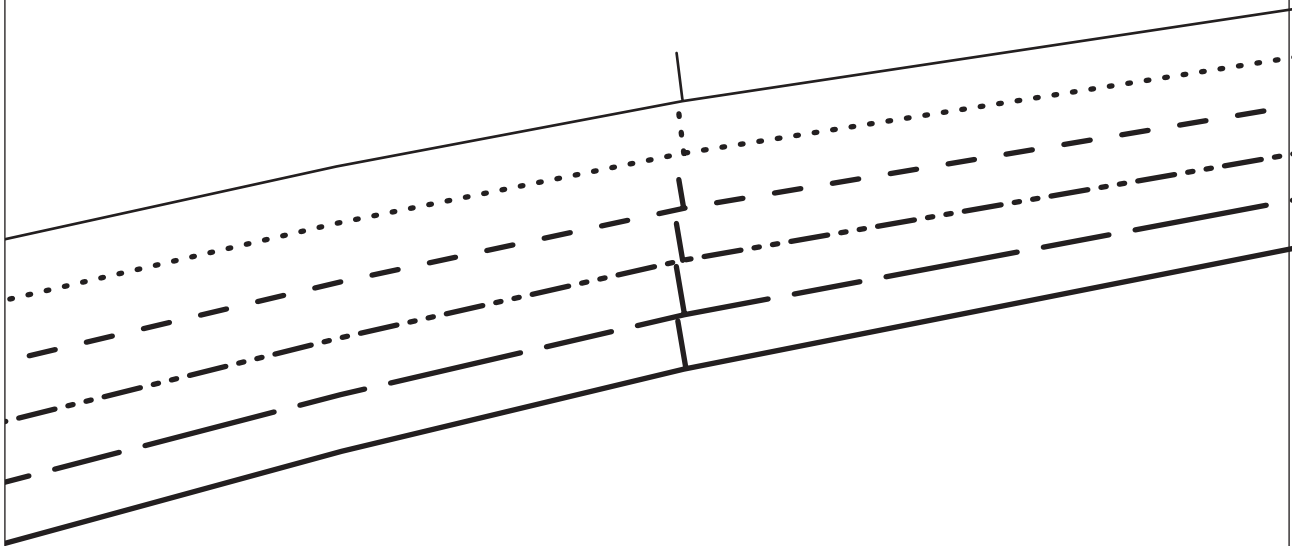


4B

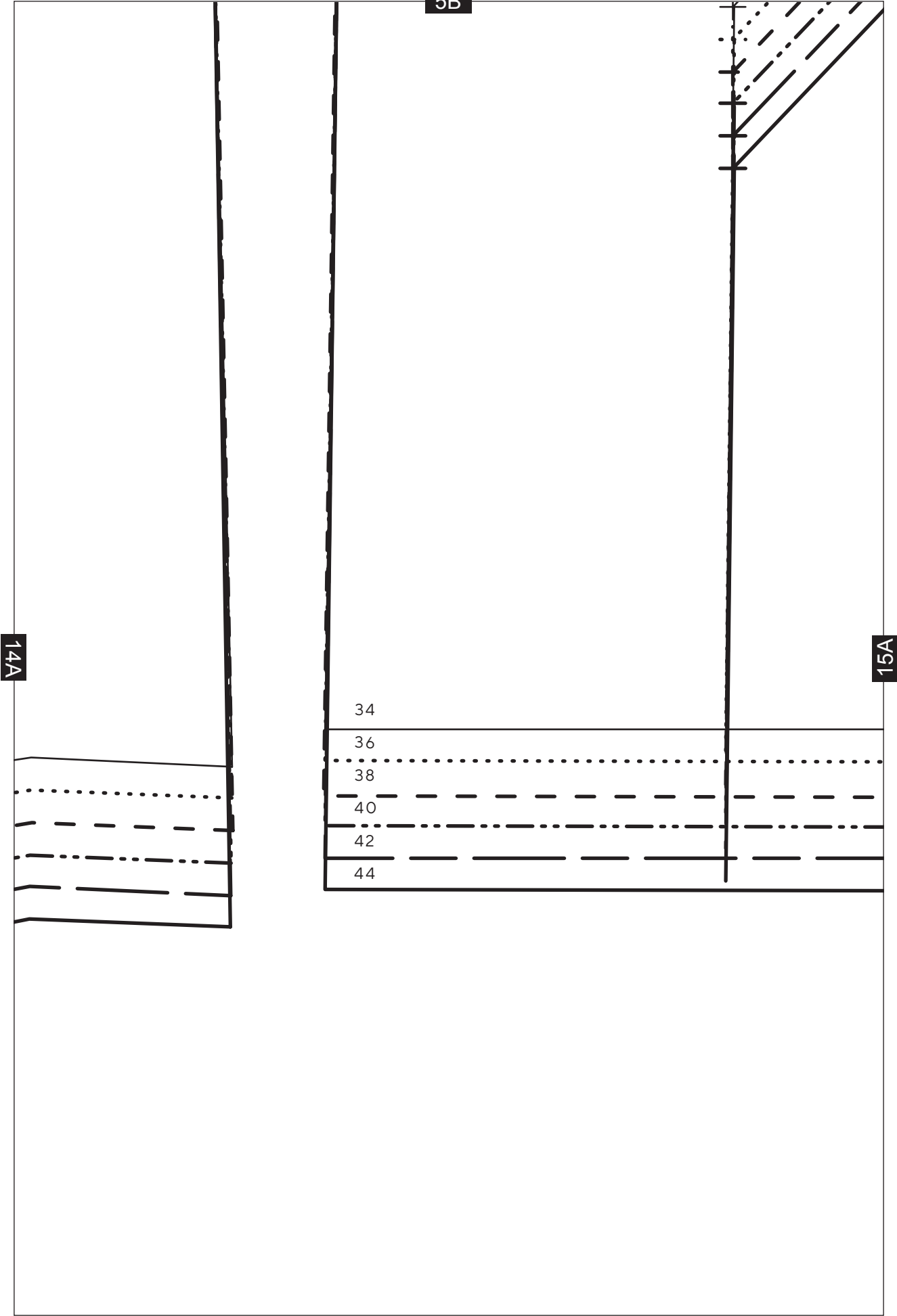


13A

14A



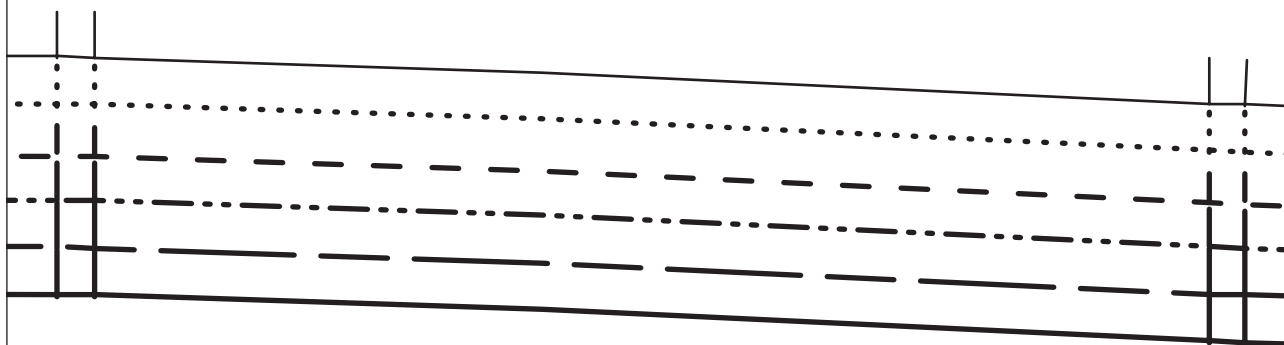
14B



6B

15A

16A



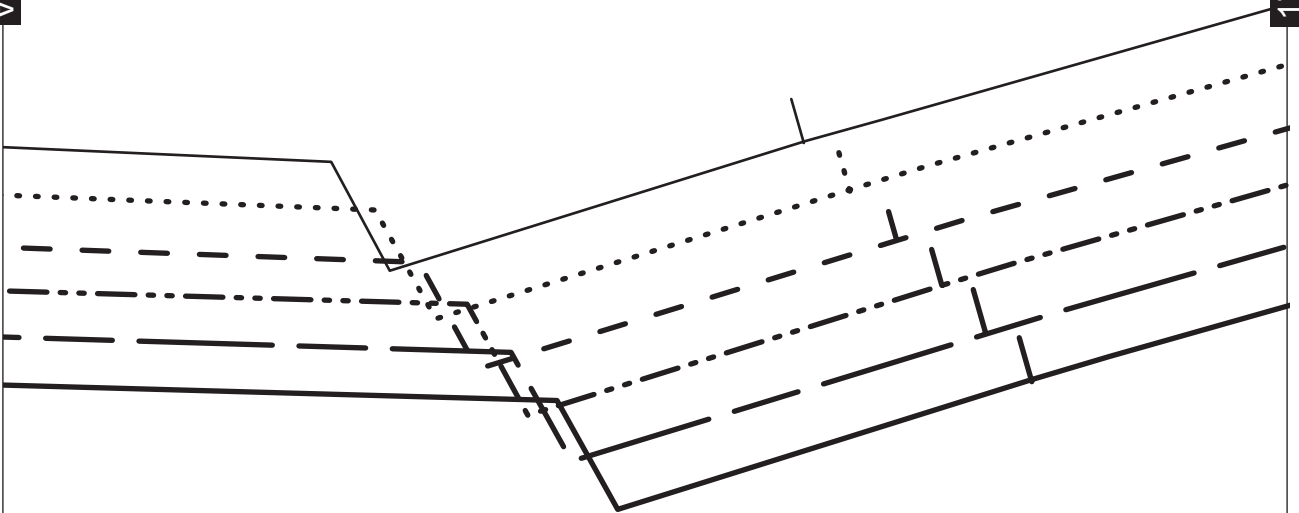


FRONT CUT 2

GRAINLINE

16A

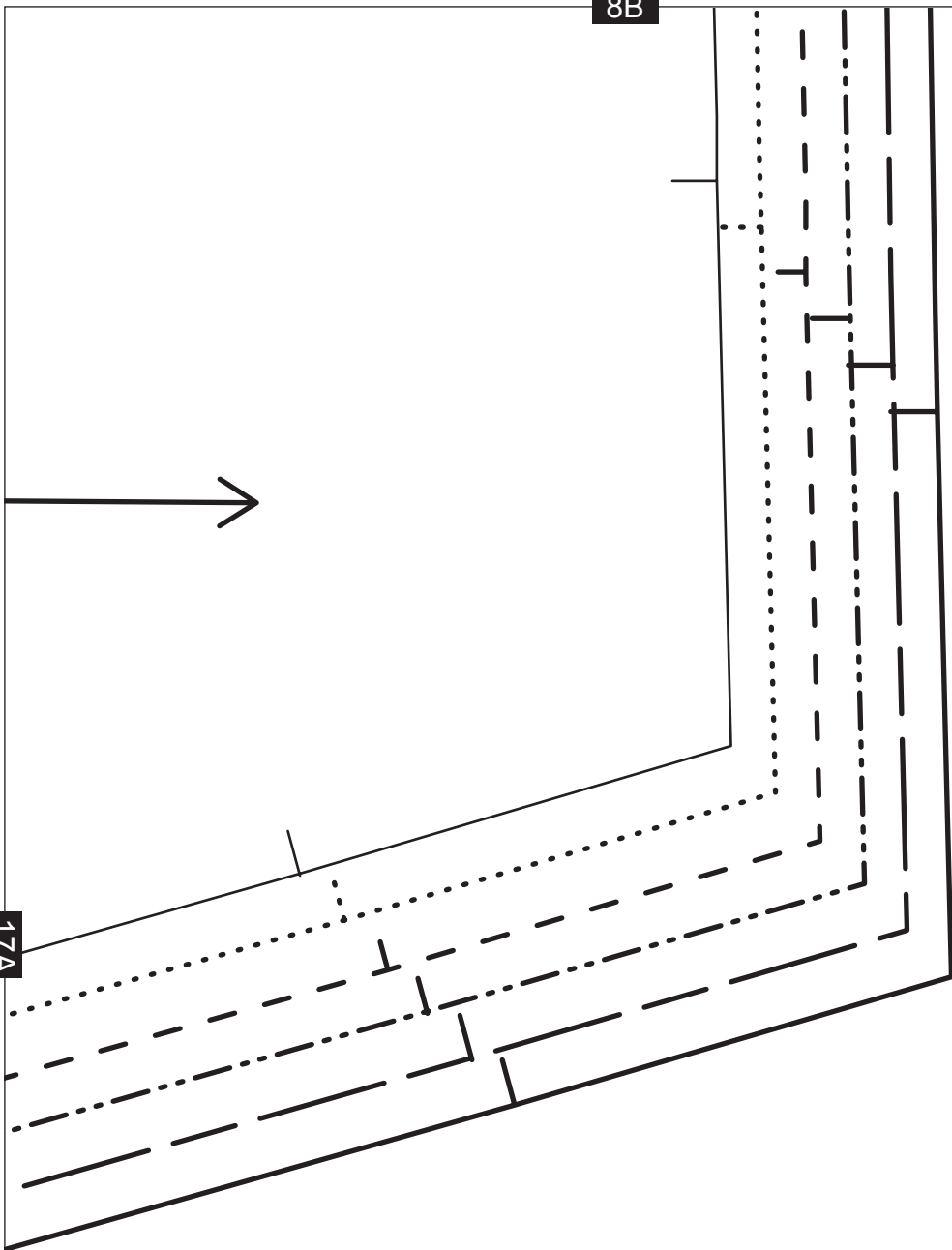
17A



8B

18A

17A



9B

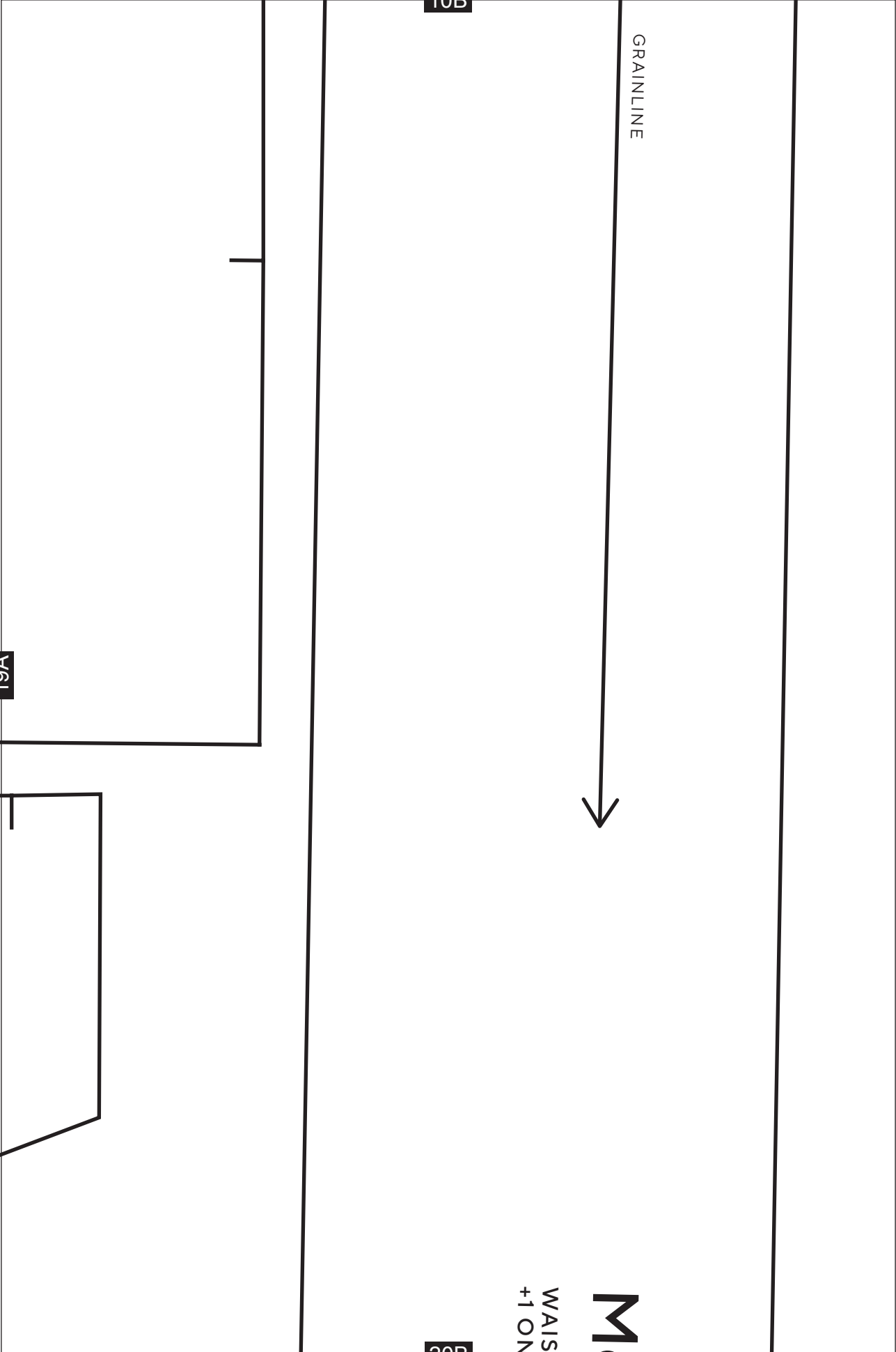
18A

19A



# Men's cargo shorts

POCKET FLAP SMALL - CUT 2 IN FABRIC +  
2 IN INTERFACING + 2 IN COTTON LINING



19A

10B

GRAINLINE



20B

WALIS  
+1 ON

M

11B

GRAINLIN



Men's cargo

UPPER POCKET BAG - CUT

21A

GRAINLIN



12B

NE



o shorts

21A

2 IN COTTON LINING

E



22A

13B

+

# Men's cargo shorts

POCKET FLAP LARGE - CUT 2 IN FABRIC  
+ 2 IN INTERFACING + 2 IN COTTON LINING

+

22A

23A

GRAINLINE

14B



23A

Men's cargo shorts  
LOWER POCKET FACING - CUT 2 IN  
FABRIC + 2 IN INTERFACING



# men's cargo shorts

TBAND - CUT 1 ON FOLD IN FABRIC  
1 FOLD IN INTERFACING

20B